

# Identifying Ash from other Common Shade trees

## 1) Bud\Leaf Arrangement

### A. Alternate\Whirled-

**Not an Ash**- Oaks, Lindens, Hackberries, Elms, Poplars, Cottonwoods, Legumes, Catalpas, Apples, Pears and Stone Fruits, Walnuts, Mt. Ashes (not true Ashes)



Alternate leaf arrangement

### B. Opposite

**Could be an ash go to column 2-**

Ashes, Maples, and Buckeyes\ Horsechestnuts



Opposite leaf arrangement

## 2) Leaf Type

### A. No leaves present

Go to Page 2

### B. Simple leaf

**Not an Ash**-Most Maples



Simple leaf- one leaf per bud

### C. Compound leaf

**Could be an Ash go to column 3-**

Ashes, Buckeyes\Horsechestnuts and Boxelder



Compound leaf- multiple leaflets per bud

## 3) Type of Compound Leaf

### A. Palmately Compound Leaf

**Not an Ash**- Buckeyes\ Horsechestnuts



Palmately Compound Leaf- Leaflets arranged like fingers on a hand

### A. Pinnately Compound Leaf

**Ash**- Green and White Ash and their clones are most common- all of which are susceptible to Emerald Ash Borer. In some parts of the state Boxelder is also a possibility (see page 2).



Pinnately Compound Leaf- Leaflets arranged like a feather

# Leafless ID (assumes twig with oppositely arranged buds)

1) Buds are hairless and sometimes clustered. Dry fruit with two wings (double samara)



Most Maples



Double samara fruit of Maples (Note: size of fruit and angle of wings varies with species).



Autumn Blaze Maple Buds

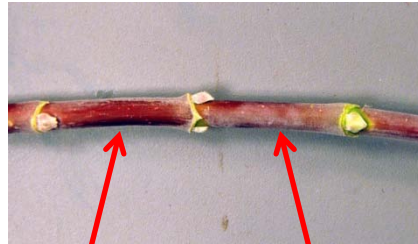


Clustered flower buds of Silver Maple

2) Twig covered in white wax which can be rubbed off revealing a olive green to purple color depending on the time of year Double samara fruit in "chains"



Boxelder



Wax rubbed off

Waxy twig

3) Terminal bud is large, plump and may be sticky. Stout Twigs. Gray fruit slightly larger than a golf ball



Buckeyes or Horsechestnut



Terminal bud of Common Horsechestnut



Fruit of Ohio Buckeye

4) Terminal bud covered in short hairs (velveteen) and chocolate to dark brown. Dry fruit with single wing (single samara)



Ash



White Ash



Green Ash



Single samara fruit (only on female trees\ clones)

For more information:  
 CSU Extension: [www.ext.colostate.edu](http://www.ext.colostate.edu)  
 Emerald Ash Borer Information:  
[www.eabcolorado.com](http://www.eabcolorado.com)